

CONTINENTAL LINE NUMBER 62 TRACK



PRODUCT INFORMATION

Innovation | Dedication | Reliability | Safety

FEATURES

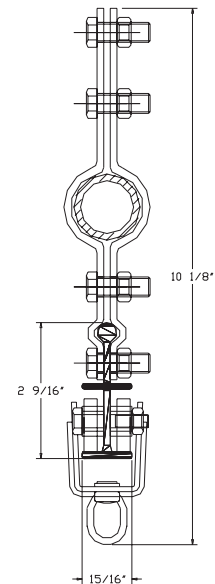
- Easily curved to radii as tight as two feet.
- Nylon coated steel carrier bodies provide quieter operation and less friction than plain steel, while still retaining high strength.
- This track makes an outstanding walk-draw track for T.V. studio applications, vomitories, blackout and house drapery.
- Track switches are available to allow for multiple drapery configurations or drapery storage tracks.
- Nylon carrier wheels or Neoprene wheels for quieter operation.
- Approximate maximum curtain weight per foot of track = 16 lbs./ft.
- Approximate drapery stacking per foot of track = 1.3 in/ft.
- Ceiling or hanging clips available for mounting with out the use of a pipe backbone.

Number 62 Track



SPECIFICATIONS

Track shall be made from extruded aluminum, a minimum of $\frac{1}{8}$ " thick, in an I-beam configuration. Each carrier shall be placed 12" on center. Single carriers shall be of two wheel construction and master carriers shall be of four wheel construction. Carrier bodies shall be of formed steel, and shall be nylon coated to reduce noise. Carrier wheels shall operate on individual ball-bearing assemblies for each wheel, and shall have nylon or optional neoprene treads. The diameter of the carrier wheels shall be not less than 1". Every carrier to have a plated swivel eye to allow for curtain attachment by s-hook. Track to be suspended from brackets and/or pipe clamps. Pipe backbone to be 1" I.D. Optional: carriers shall incorporate plated trim chains. Continental number 62 track fabricated by Tiffin Scenic Studios, Inc. Tiffin, Ohio



Cross Section

Track and Components

