

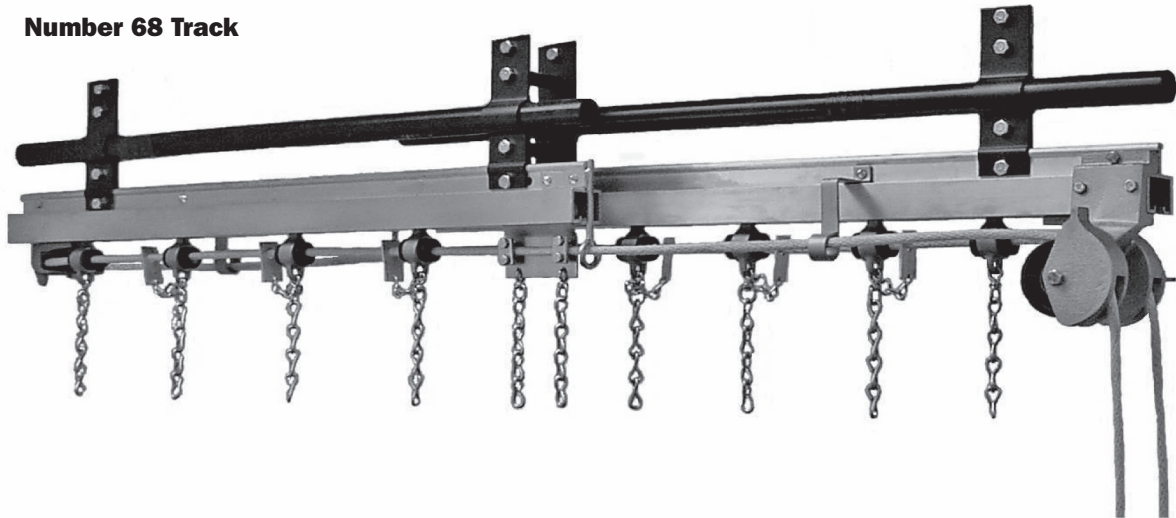
CONTINENTAL LINE NUMBER 68 TRACK



PRODUCT INFORMATION

Innovation | Dedication | Reliability | Safety

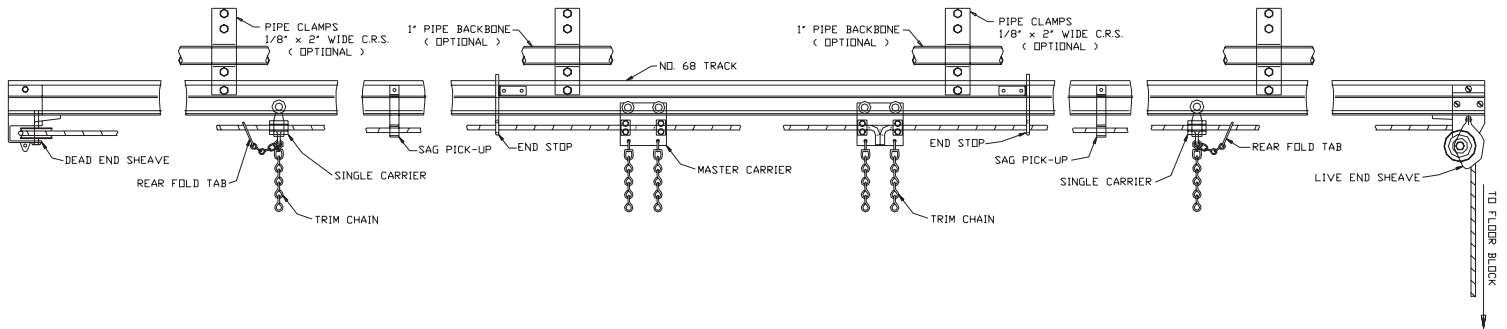
Number 68 Track



FEATURES

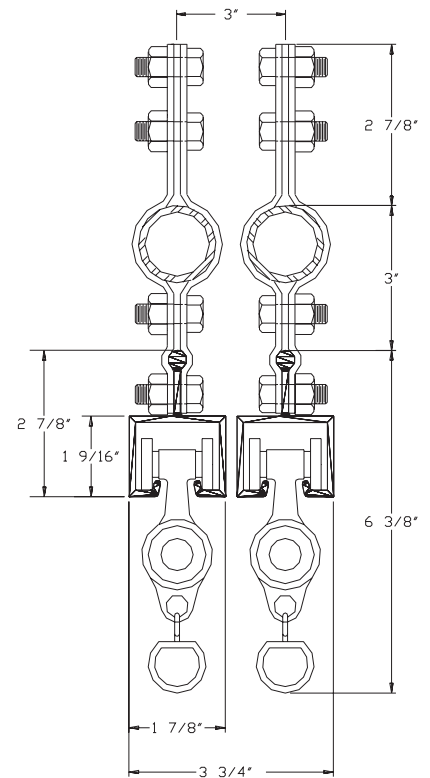
- Aluminum channel, block housings, and carrier bodies provide quieter operation than steel.
- The heat treated aluminum alloy carrier bodies are machine faced for precision alignment on the track raceways.
- The hollow “pass-through” design of the standard carrier keeps the operating line captive within the confines of the track during operation. This design also permits the use of rear folding (back packing) tabs, which let the curtain stack at the offstage edge, so the curtain travels offstage as a smooth panel.
- The built-in rubber spacer/silencer on the single carrier helps eliminate the noise normally associated with the stacking of carriers as the curtains are opened.
- Built-in strong-back and direct coupling to pipe batten provide exceptional rigidity.
- This track is typically used for medium to heavy stage drapery in straight applications.
- Approximate maximum curtain weight per foot of track = 20 to 30 lbs./ft.
- Approximate drapery stacking per ft. of track = 1.5 in/ft.
- Ceiling or hanging clips available for mounting with out the use of a pipe backbone.

Track and Components



SPECIFICATIONS

Track channel shall be made from extruded aluminum, a minimum of 1/8" thick, and have 1" standard black steel pipe backbone full length. Single carriers shall be of two wheel construction and master carriers shall be of four wheel construction. Single carriers shall incorporate a resilient rubber tube silencer spacer with 1/4" wall thickness of sufficient diameter to allow free travel for full 3/8" diameter operating line. Single carrier bodies shall be cast aluminum. Master carrier bodies shall be formed steel. Carrier wheels shall operate on individual ball-bearing assemblies for each wheel, and shall have nylon or optional neoprene treads. The diameter of the carrier wheels shall be not less than 1". Carriers shall incorporate plated trim chains and rear-fold tabs. Operating line shall be number 12 (3/8" diameter) with cable center, and the end sheaves and floor sheaves shall be 3" diameter, and shall operate on ball bearings. Traveler tracks shall overlap a minimum of 3' 0" at center and shall have suitable center stage sag pick-ups to remove sag from horizontal operating lines. Side plates of floor blocks shall be slotted to permit vertical adjustment of sheave to remove slack in operating line. Block shall be provided with locking handle to permit sheave adjustment without resort to tools, and vertical adjustment shall be a minimum of 6". Continental number 68 tracks fabricated by Tiffin Scenic Studios, Inc. Tiffin, Ohio



Cross Section